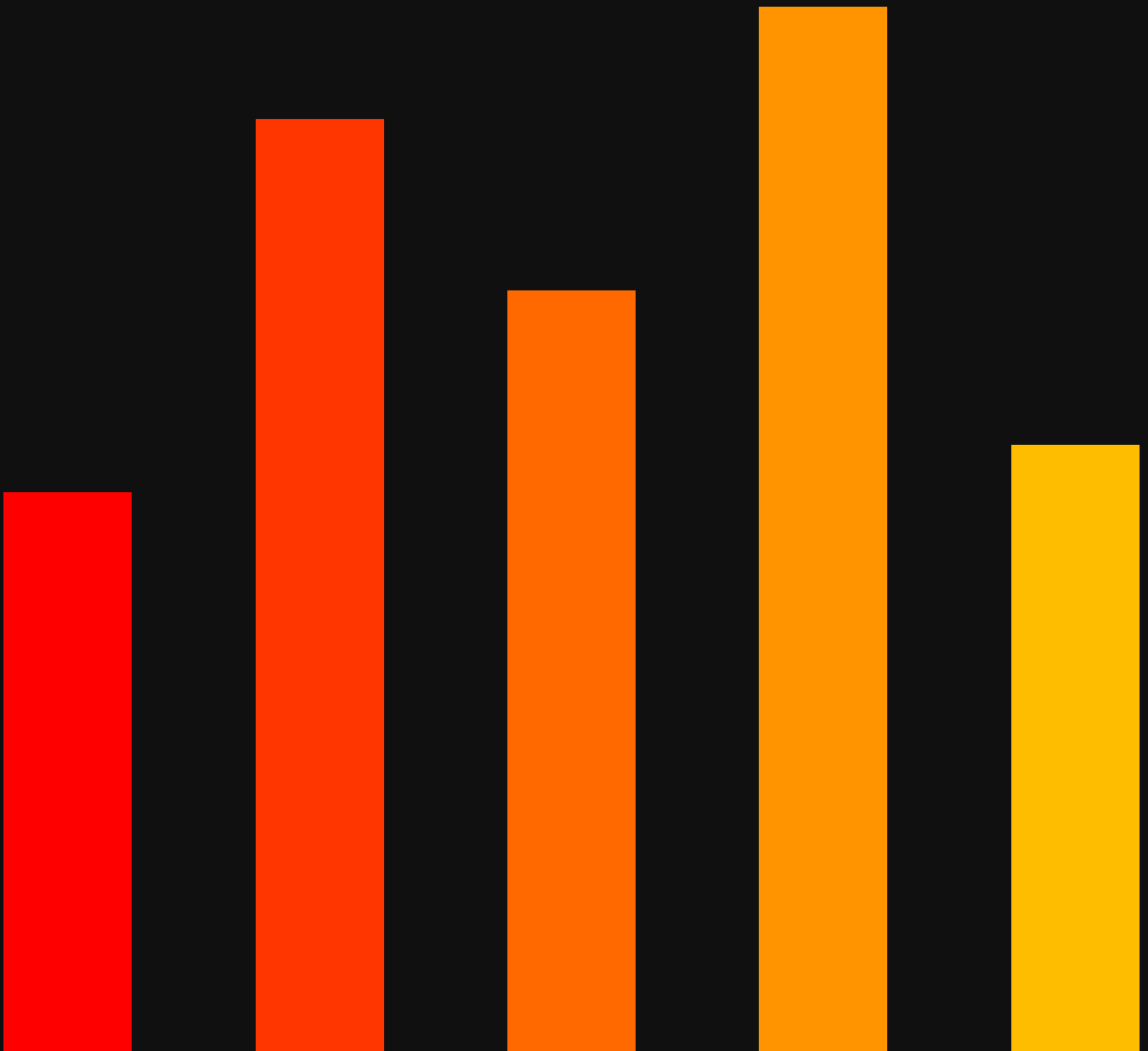




INSIGHTS REPORT

# Integrating Generative AI and Rule-Based Workflows for Transformative Bill Review

By Murtuza Vohra



**MorAI Spend Insights**



## Transforming Bill Review

Traditional rule-based workflow systems have been the backbone of bill review, ensuring compliance with standardized billing guidelines. However, these systems often lack the ability to interpret qualitative aspects of billing, process unstructured data, or adapt dynamically to evolving patterns.

Generative AI (GenAI) enhances these workflows by adding narrative understanding, predictive analytics, and contextual insights, creating a comprehensive platform for bill review. This white paper explores how integrating GenAI with rule-based systems enables organizations to streamline processes, enhance compliance, and gain a significant competitive advantage.



# The Role of Rule-Based Systems in Bill Review



## Rule-based systems are essential for:

Automating Routine Checks	Ensuring Baseline Compliance	Streamlining Workflows
Identifying issues like incorrect rates, block billing, or missing details.	Enforcing adherence to predefined billing guidelines.	Standardizing processes across legal spend management.







## Challenges of Rule-Based Systems

Limited Scope	Static Nature	Blind Spots
Cannot process unstructured invoice narratives or assess qualitative aspects.	Requires manual updates to rules, making it less adaptable to changes.	Misses inefficiencies or strategic misalignments in billing activities.

# Generative AI: Addressing the Gaps

Generative AI excels where rule-based systems fall short by leveraging advanced natural language processing (NLP) and machine learning capabilities.

## Core Capabilities of GenAI

 Narrative Understanding	 Contextual Analysis	 Dynamic Adaptability	 Predictive Analytics
Analyzes unstructured invoice data for task relevance and appropriateness.	Assesses whether billed activities align with case objectives and complexity.	Learns from past data to refine insights and adapt to evolving billing trends.	Identifies potential violations and inefficiencies before they escalate.



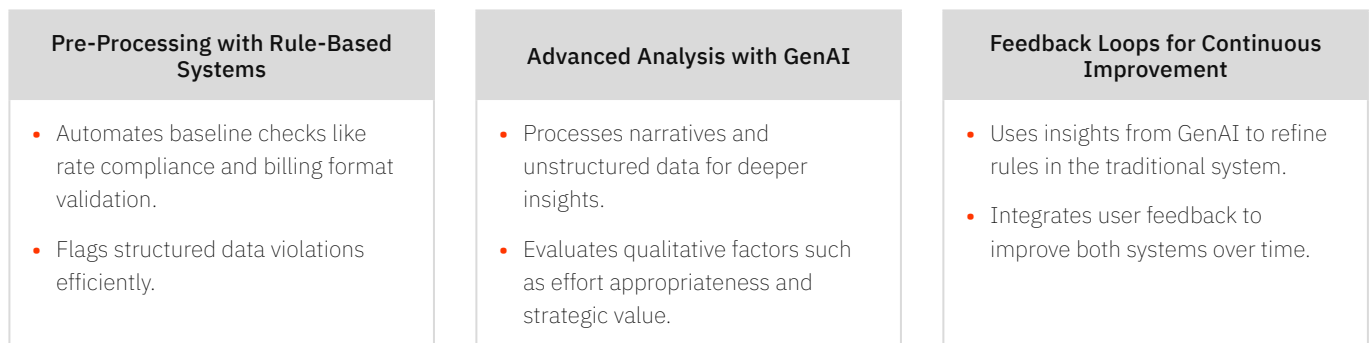
## Example

While a rule-based system flags an incorrect hourly rate, GenAI detects that the billed task could have been delegated to a lower-cost resource.

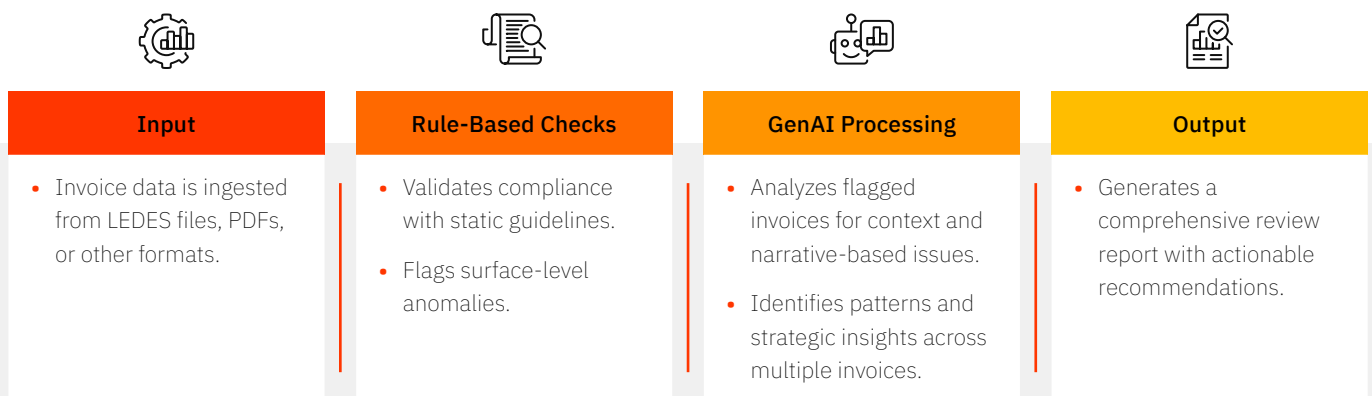
# Integration of Generative AI with Rule-Based Workflows

Combining GenAI with rule-based systems creates a powerful, hybrid platform that maximizes the strengths of both approaches.

## Workflow Integration Framework



## Data Flow in a Combined Platform



# Competitive Advantages of Integration

## Enhanced Compliance and Accuracy

Combines the precision of rule-based checks with the depth of GenAI insights.

Reduces false positives and negatives through contextual understanding.



### Example

The system detects not only incorrect rates but also inefficiencies, such as partners billing for routine research tasks.

## Cost Savings and Efficiency

Automates repetitive tasks, reducing manual effort.

Identifies cost-saving opportunities by flagging redundant or misaligned activities.



### Impact

Organizations report savings of up to 30% on legal spend by optimizing workflows.

## Scalable Insights and Adaptability

Processes large volumes of invoices in real-time, enabling scalability.

Adapts to changing billing guidelines and case requirements dynamically.



### Example

AI learns new billing patterns, like emerging trends in stealth billing, and updates workflows automatically.

## Strategic Decision-Making

Provides actionable insights into law firm performance and cost efficiency.

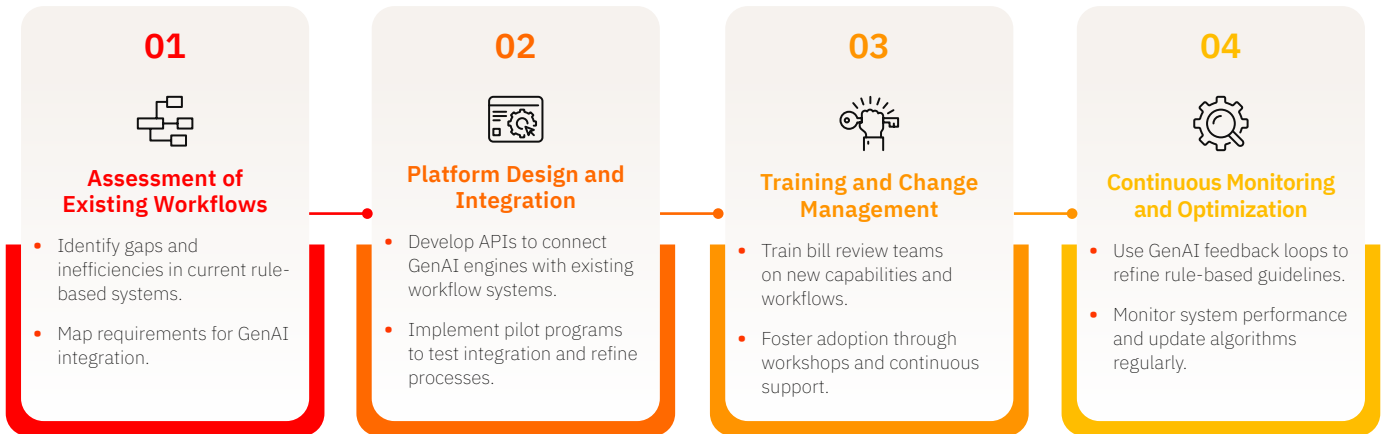
Supports strategic allocation of legal spend based on ROI analysis.



### Impact

Enables data-driven negotiations with panel firms and improves spend predictability.

## Implementation Roadmap



## Quantifiable Benefits of Integrated Platforms

Metric	Rule-Based Only	Rule-Based + GenAI
Compliance Accuracy	Moderate	High
Narrative Analysis	Minimal	Comprehensive
Processing Speed	Moderate	Real-Time
Cost Savings Identified	Limited	Significant (20-30%)
Adaptability to Changes	Low	High

## Conclusion: A Unified Platform for Competitive Advantage

Integrating GenAI with traditional rule-based workflow systems creates a comprehensive, next-generation bill review platform. This hybrid approach:

- Ensures deep compliance with billing guidelines.
- Drives significant cost savings and operational efficiencies.
- Provides strategic insights to optimize legal spend and firm performance.

Organizations adopting this integrated approach will not only streamline their bill review processes but also gain a significant competitive advantage in legal spend management.

*For a demonstration of how GenAI can enhance your rule-based workflows and revolutionize bill review, contact us to explore customized solutions for your organization.*

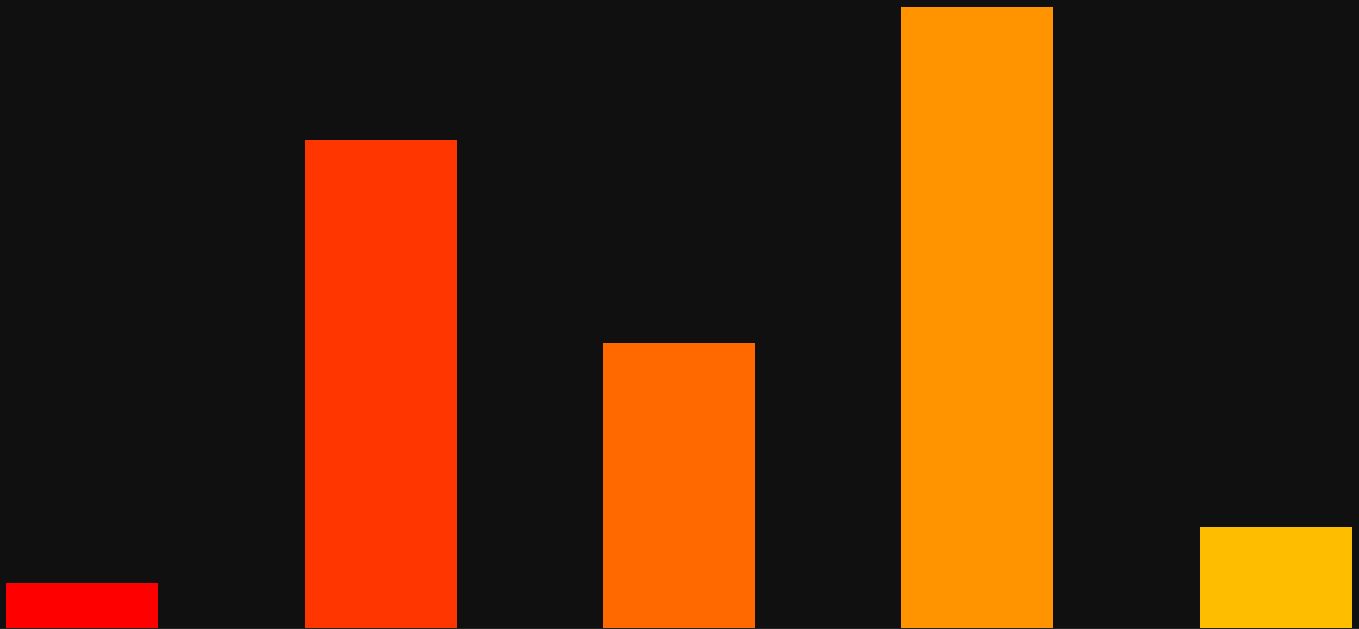
# About the author



Murtuza Vohra

Murtuza is a Managing Director at Morae. He works with legal departments to develop innovative business solutions, including selecting and implementing technology, that will drive greater operational efficiency and cost savings.

[murtuza.vohra@morae.com](mailto:murtuza.vohra@morae.com)



Changing  
Legal  
Together

**Morae Global Corporation** is trusted worldwide by leading law firms, legal departments, and compliance functions for the delivery of award-winning solutions for digital transformation and legal transformation.

Abu Dhabi  
Bangalore  
Cape Town

Chicago  
Frankfurt  
Hong Kong

Houston  
London  
New York

Sydney  
Washington DC  
Zurich